

## SUMMARY OF MILL LEVY INCREASE TAX IMPLICATIONS

Zoning	# of PARCELS	County Assessed Value	Est. Assessor Actual Values	Current Mill Levy	Property Taxes	Proposed Mill Increase	Town Tax Revenue	% of Total Increase	Increase Per \$100,000 in Value
AGRICULTURAL	2	\$ 3,828	\$ 13,200	97.814	\$ 374	7.500	\$ 29	0.00%	\$217.50
CONSERVATION	23	\$ 187,746	\$ 647,400	97.814	\$ 18,410	7.500	\$ 1,408	0.13%	\$217.50
VACANT LAND	26	\$ 2,057,492	\$ 7,094,800	97.814	\$ 201,252	7.500	\$ 15,431	1.46%	\$217.50
COMMERCIAL	46	\$ 37,489,988	\$ 129,275,820	97.814	\$ 3,667,046	7.500	\$ 281,175	26.52%	\$217.50
MIXED USE	14	\$ 2,081,300	\$ 7,176,897	97.814	\$ 203,580	7.500	\$ 15,610	1.47%	\$217.50
RESIDENTIAL - A (97.814)	1,598	\$ 81,563,393	\$ 1,140,746,755	97.814	\$ 7,978,042	7.500	\$ 611,725	57.70%	\$53.63
RESIDENTIAL - B (98.384)	134	\$ 17,967,580	\$ 251,294,825	98.384	\$ 1,767,722	7.500	\$ 134,757	12.71%	\$53.63
EXEMPT	52	\$ 5,754,035	\$ 19,841,500	0.000	\$ -	0.000	\$ -	0.00%	\$ -
<b>TOTALS</b>	<b>1,895</b>	<b>\$ 147,105,362</b>	<b>1,556,091,197</b>		<b>\$ 13,836,426</b>		<b>\$ 1,060,135</b>	<b>100.00%</b>	
							Commercial \$ 313,653		
							Residential \$ 746,482		

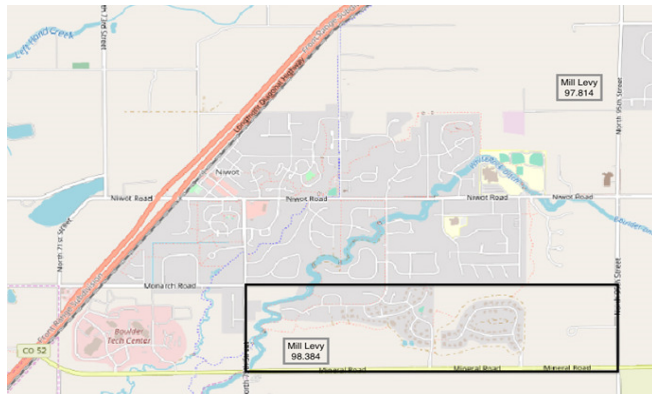
### Effect of 1% Property Value Increase Due to Incorporation:

	Median Assessor Actual Value	Tax from 9 Mill Increase	1% Value Increase	Tax cost of Value Increase	Total New Tax	New Tax as % of Value Increase	Yrs of Tax Covered by Value Increase
COMMERCIAL	1,150,000	\$ 2,501	\$ 11,500	\$ 356	\$ 2,857	24.85%	4.02
RESIDENTIAL - A (97.814)	499,775	\$ 268	\$ 4,998	\$ 38	\$ 306	6.13%	16.32
RESIDENTIAL - B (98.384)	1,301,457	\$ 698	\$ 13,015	\$ 100	\$ 798	6.13%	16.31

### Effect of 5% Property Value Increase Due to Incorporation:

	Median Assessor Actual Value	Tax from 9 Mill Increase	5% Value Increase	Tax cost of Value Increase	Total New Tax	New Tax as % of Value Increase	Yrs of Tax Covered by Value Increase
COMMERCIAL	1,150,000	\$ 2,501	\$ 57,500	\$ 1,781	\$ 4,282	7.45%	13.43
RESIDENTIAL - A (97.814)	499,775	\$ 268	\$ 24,989	\$ 191	\$ 459	1.84%	54.46
RESIDENTIAL - B (98.384)	1,301,457	\$ 698	\$ 65,073	\$ 500	\$ 1,198	1.84%	54.34

### Residential Tax Areas:



See Boulder County Assessor for detailed Mills breakdown

